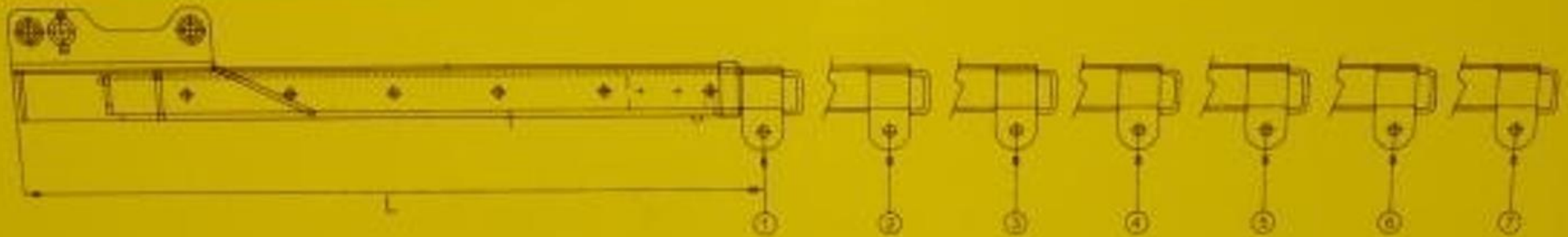


Lastediagram for 5 tonns kranbom (art.nr. 17388)



5tons Crane jib with combined bracket	Safe Working Load (SWL) per position						
Position	1	2	3	4	5	6	7
Extension (mm)	2810	3175	3540	3905	4270	4635	5000
SWL (kg)	5000	4000	2650	1900	1450	1200	1000

5 tonn kranbom med <u>kryssfeste</u>	Tillatt lastekapasitet (SWL) pr. trinn						
	1	2	3	4	5	6	7
Trinn	1	2	3	4	5	6	7
Forlengelse (mm)	2810	3175	3540	3905	4270	4635	5000
SWL (kg)	5000	4000	2650	1900	1450	1200	1000